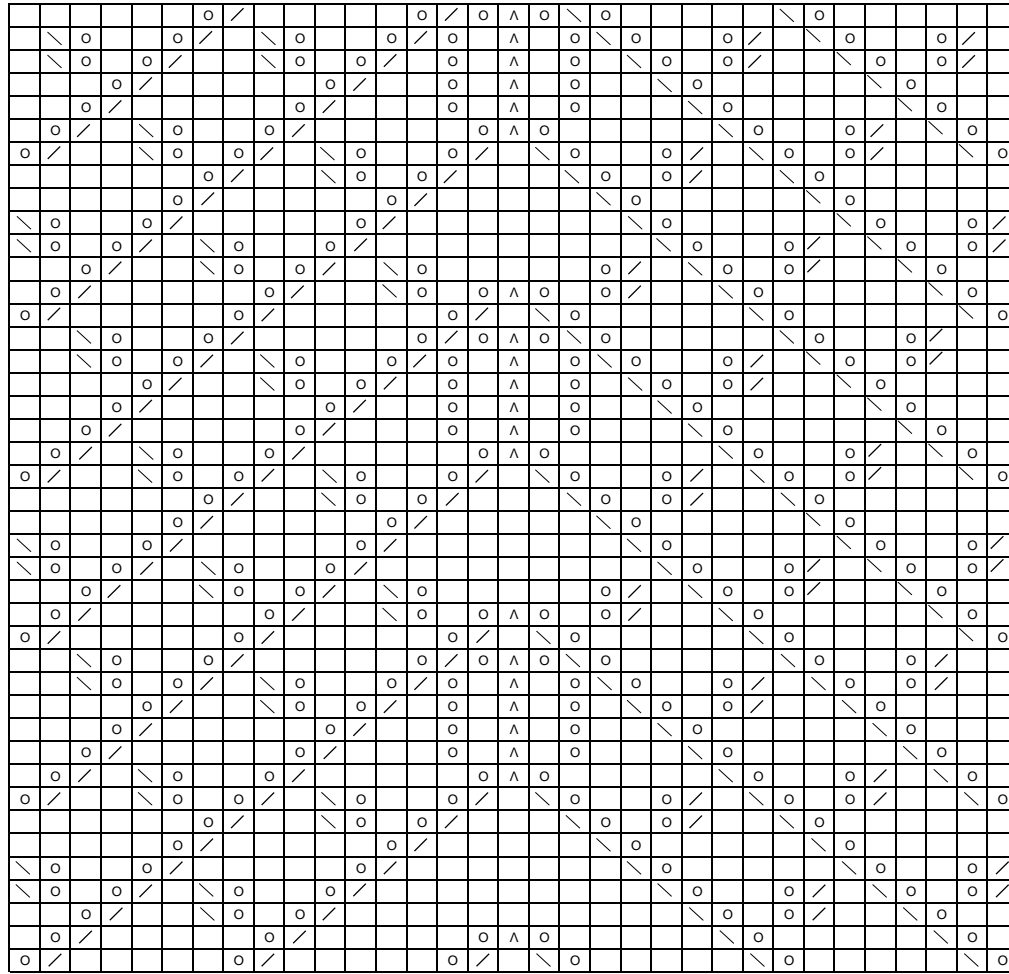


CHART 2



83	167
81	165
79	163
77	161
75	159
73	157
71	155
69	153
67	151
65	149
63	147
61	145
59	143
57	141
55	139
53	137
51	135
49	133
47	131
45	129
43	127
41	125
39	123
37	121
35	119
33	117
31	115
29	113
27	111
25	109
23	107
21	105
19	103
17	101
15	99
13	97
11	95
9	93
7	91
5	89
3	87
1	85

- O = Yarn Over
- / = Knit 2 stitches together
- \ = Slip one stitch as if to knit, slip second stitch as if to knit, then knit these two stitches together
- ^ = Slip two stitches together as if to knit, slip third stitch and knit these three stitches together
- = Knit