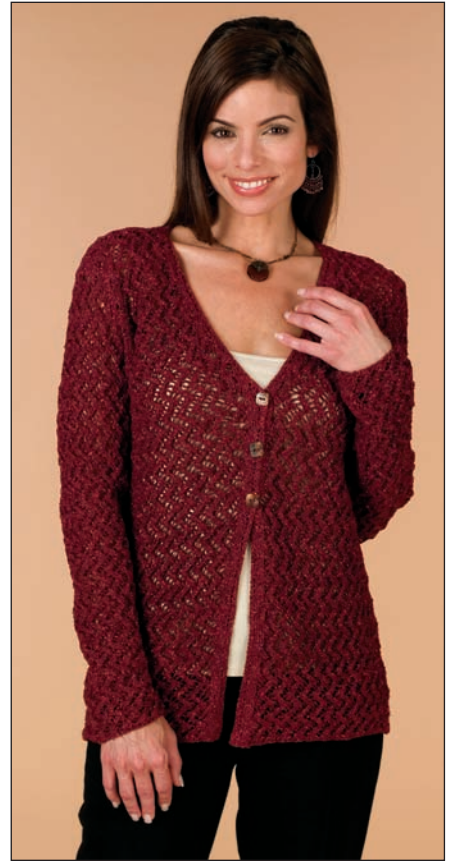


17 Timeless Gentry Cardigan

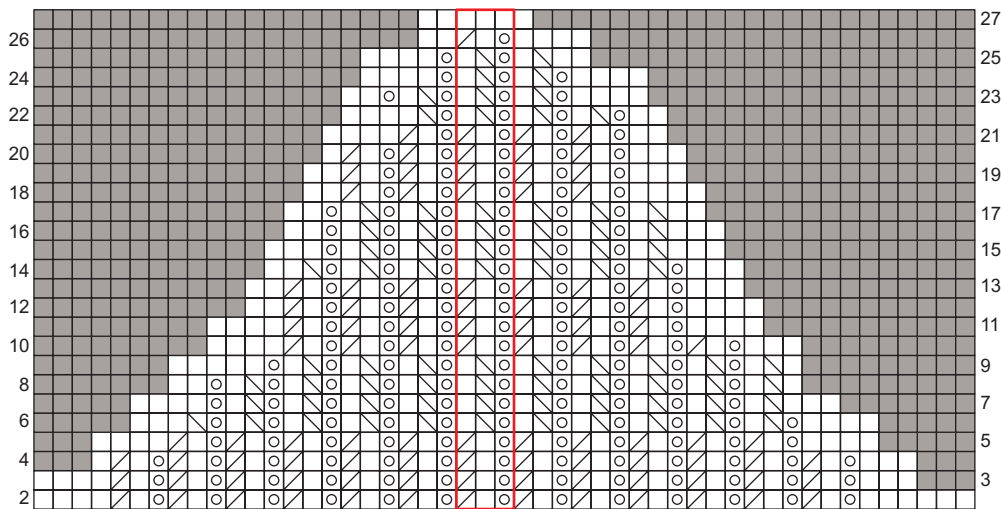


KEY

- ☐ = K on RS, P on WS
- ⊙ = Yarnover
- ▧ = K2tog on RS, PRtog on WS
- ▨ = Sl 1, K1, pssso on RS, P2tog tbl on WS
- = No Stitch
- ▭ = Pattern Repeat

NOTE: Odd Rows are worked Right to Left
Even Rows are worked Left to Right

SLEEVE CAP (SIZE SMALL)



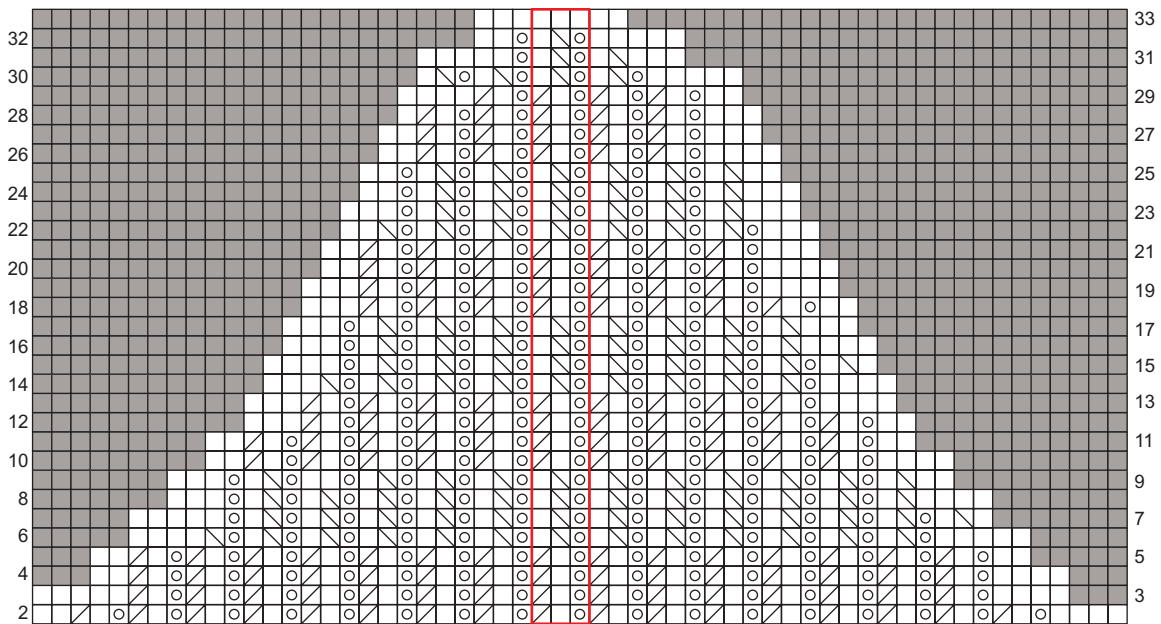
17 Timeless Gentry Cardigan

KEY

- = K on RS, P on WS
- (with circle) = Yarnover
- (with diagonal line) = K2tog on RS, PRtog on WS
- (with diagonal line and circle) = Sl 1, K1, pssso on RS, P2tog tbl on WS
- (shaded) = No Stitch
- (red outline) = Pattern Repeat

NOTE: Odd Rows are worked Right to Left
Even Rows are worked Left to Right

SLEEVE CAP (SIZE MEDIUM & LARGE)



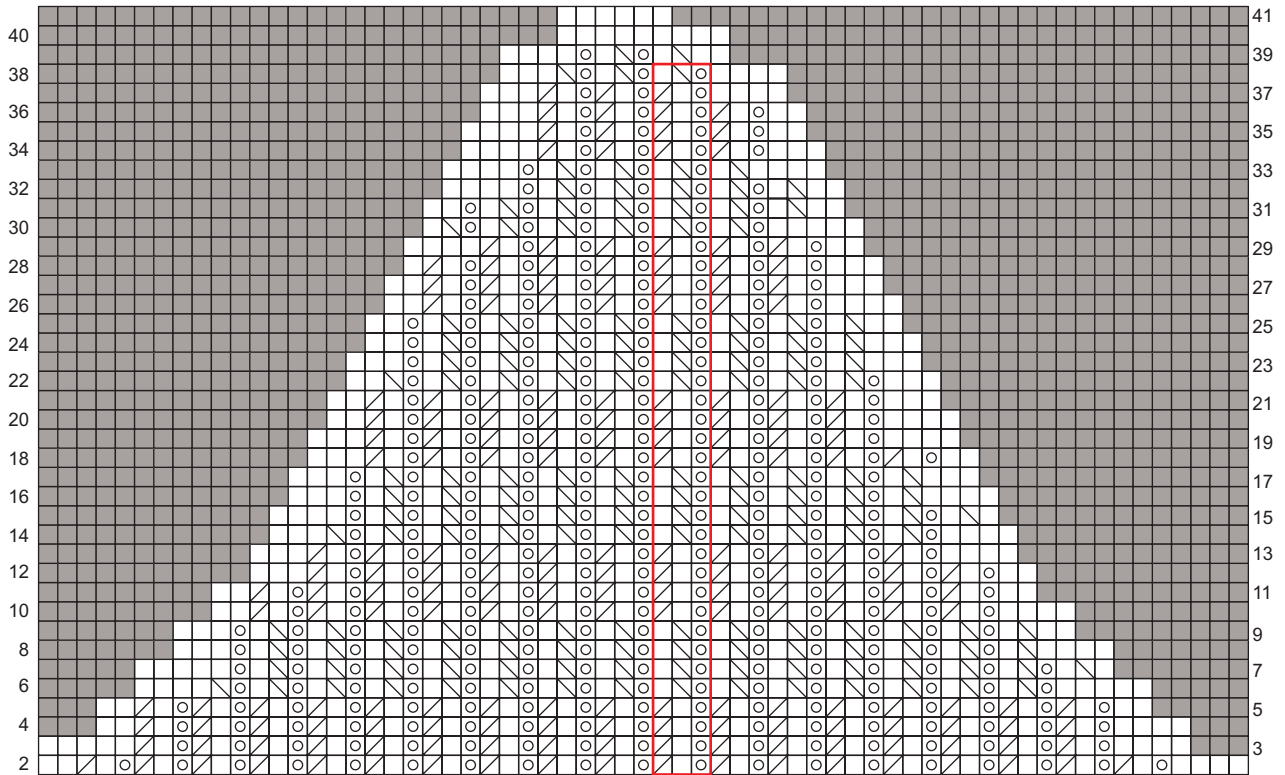
17 Timeless Gentry Cardigan

KEY

- = K on RS, P on WS
- = Yarnover
- = K2tog on RS, PRtog on WS
- = Sl 1, K1, pssso on RS, P2tog tbl on WS
- = No Stitch
- = Pattern Repeat

NOTE: Odd Rows are worked Right to Left
Even Rows are worked Left to Right

SLEEVE CAP (SIZE X-LARGE)



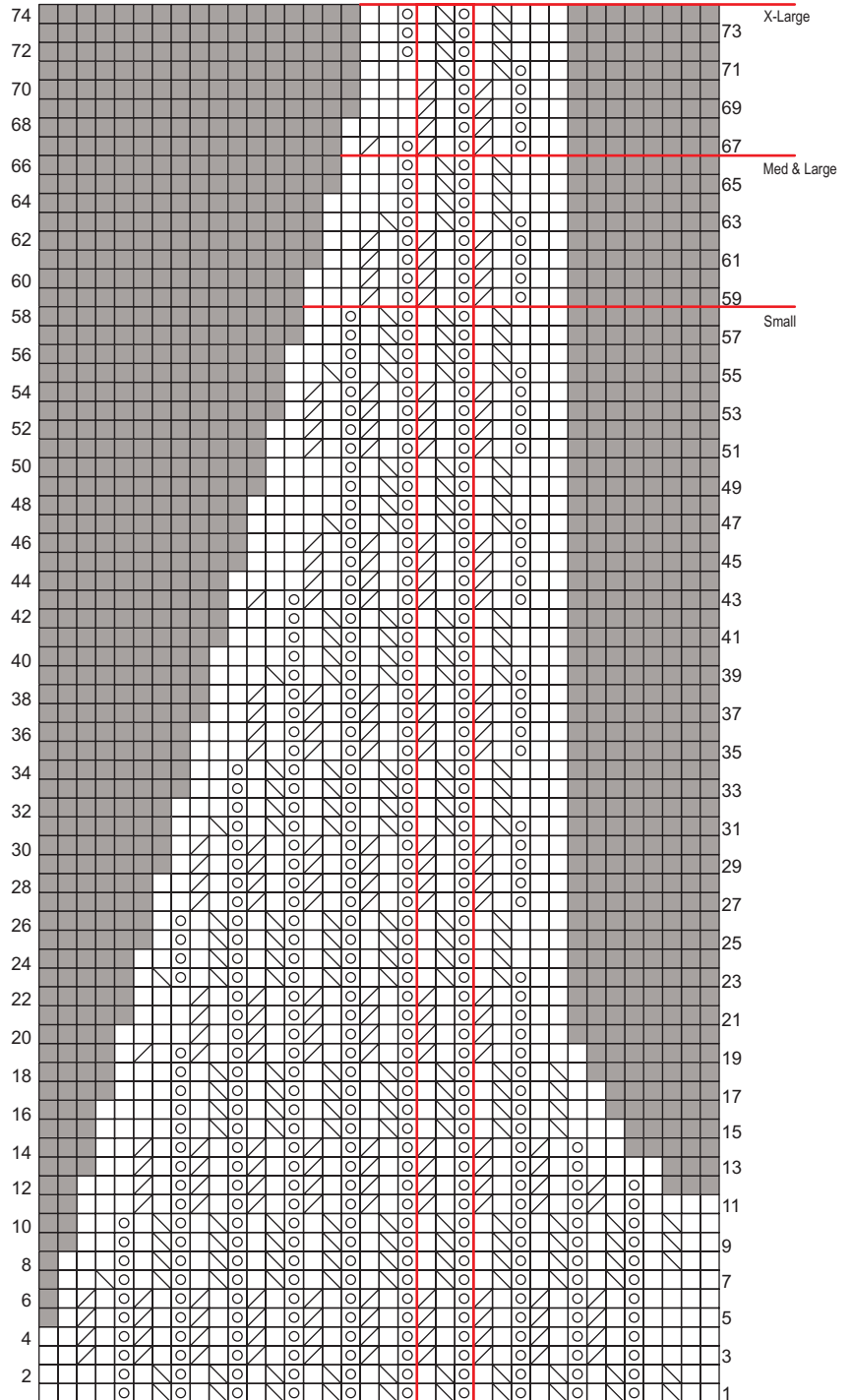
17 Timeless Gentry Cardigan

KEY

- = K on RS, P on WS
- = Yarnover
- = K2tog on RS, PRtog on WS
- = SI 1, K1, pssso on RS, P2tog tbl on WS
- = No Stitch
- = Pattern Repeat

NOTE: Odd Rows are worked Right to Left
Even Rows are worked Left to Right

LEFT FRONT SHAPING CHART



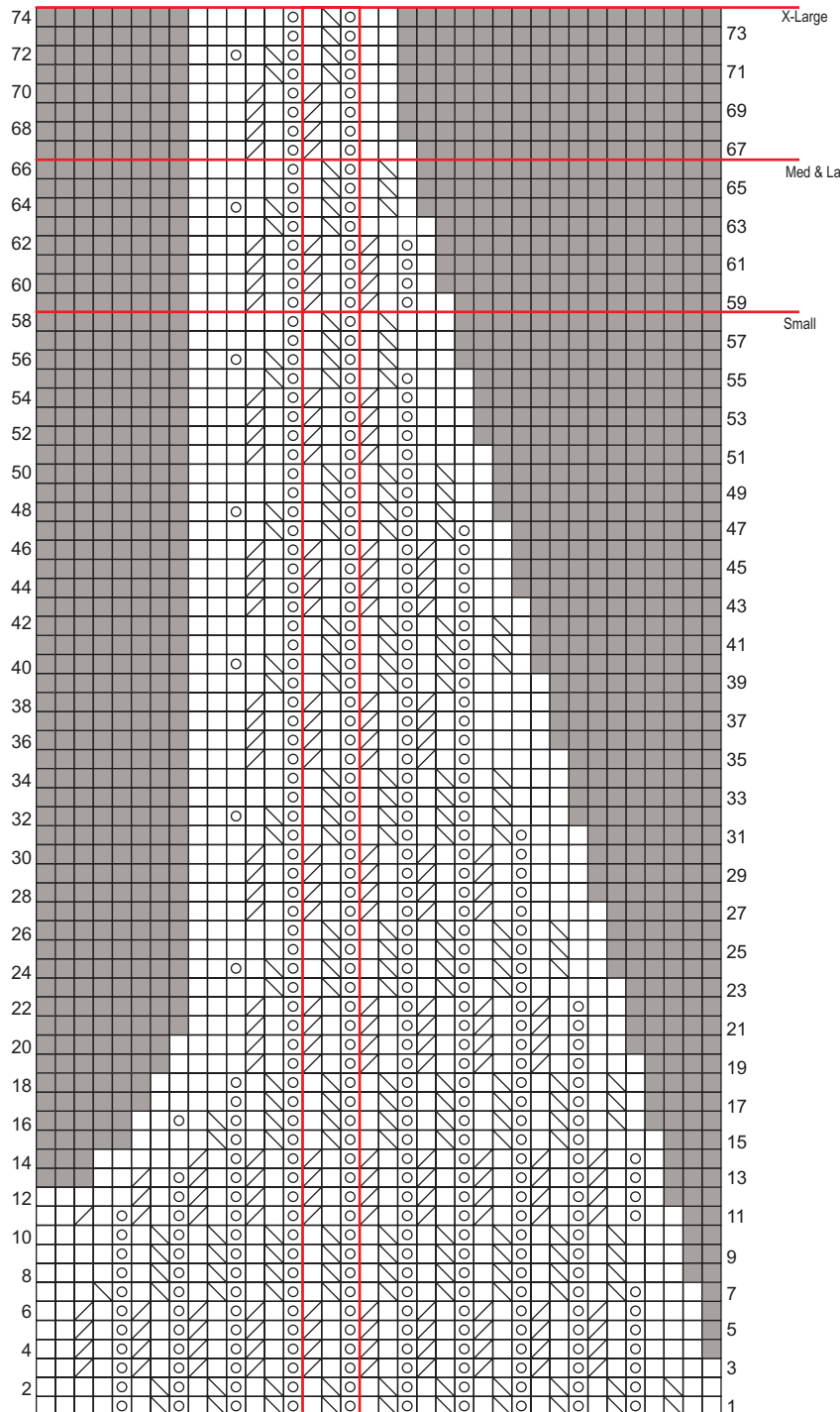
17 Timeless Gentry Cardigan

KEY

- = K on RS, P on WS
- = Yarnover
- = K2tog on RS, PRtog on WS
- = Sl 1, K1, pssso on RS, P2tog tbl on WS
- = No Stitch
- = Pattern Repeat

NOTE: Odd Rows are worked Right to Left
Even Rows are worked Left to Right

RIGHT FRONT SHAPING CHART



17 Timeless Gentry Cardigan

KEY

- = K on RS, P on WS
- = Yarnover
- ▧ = K2tog on RS, PRtog on WS
- ▨ = Sl 1, K1, pssso on RS, P2tog tbl on WS
- = No Stitch
- ▭ = Pattern Repeat

NOTE: Odd Rows are worked Right to Left
Even Rows are worked Left to Right

