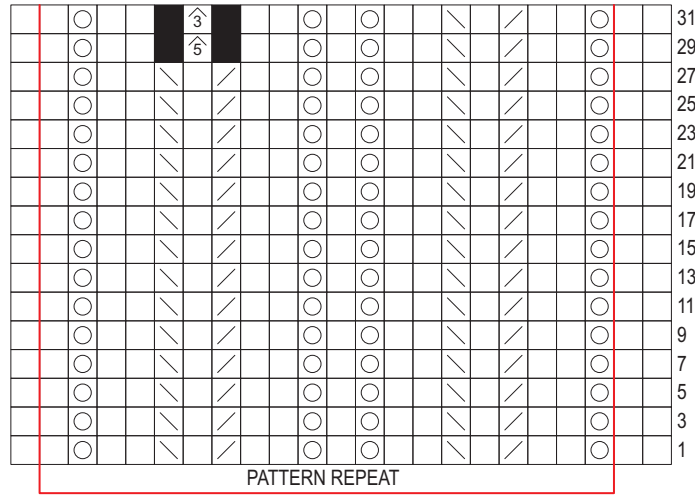


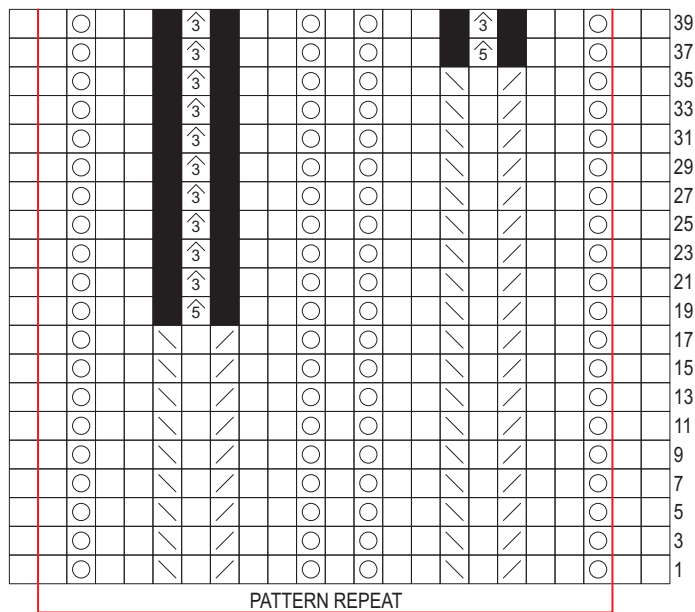
28 Chic Bamboo

Continued from page 111

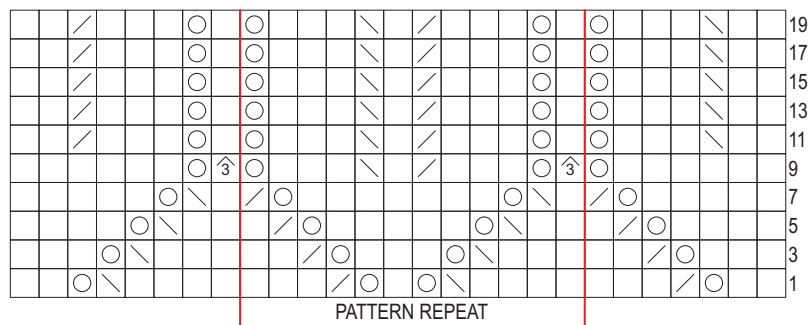
LOOP EYELET COLLAR CHART



LOOP EYELET SLEEVE CHART



AJOURE CHART



KEY

- = no stitch
- = K
- = yo
- = K2tog
- = SI 1 kwise, K1, pssso
- 3 = SI 2 kwise, K1, p2sso
- 5 = SI 3 kwise, K2tog, p3sso
- = pattern rep

NOTE: Only RSRs are charted;
P all WSRs.